



Le
Quest 心乐轩



Floor Plans

Home is
where the future
will reside.





Artist's Impression

Site Plan

Reawaken

Let your senses come alive

- 01 50m Lap Pool
- 02 Aqua Lounge
- 03 Stone Pool Deck
- 04 Picnic Ground
- 05 Tranquil Lawn
- 06 Zen Garden
- 07 Reading Room
- 08 Chill-out Lounge
- 09 Dining Alfresco
- 10 Fitness Corner
- 11 Social Room
- 12 Recreational Club

Rediscover

The joy of bonding with your loved ones and friends

- 13 Family Pool
- 14 Bubble Jet
- 15 Sculpture Water Feature
- 16 Family Pavilion
- 17 Dining Pavilion
- 18 Sky BBQ

Retreat

Have some quiet moments to enjoy the peace

- 19 Maze Garden
- 20 Garden Trail
- 21 Herb Garden

Reinvigorate

Inspire and enliven your lifestyle

- 22 Putting Green
- 23 Reflective Water Feature
- 24 Gym
- 25 Spa Lobby
- 26 Therapy Pool

Re-energise

Keep up the zest for life

- 27 Kid's Pool
- 28 Children's Playground
- 29 BBQ Pavilion
- 30 Tennis Court
- 31 The Retreat
- 32 Kid's Pavilion
- 33 Residential Arrival Lobby

Others

4th Storey

- A Outdoor Genset

3rd Storey

- B Management Office

1st Storey

- C Guard House
- D Substation
- E Bin Centre

LEGEND

- Studio + Study
- 1-Bedroom + Study
- 2-Bedroom
- 2-Bedroom Premium
- 2-Bedroom Deluxe + Study
- 3-Bedroom
- 3-Bedroom Suite
- 3-Bedroom Premium
- 3-Bedroom Deluxe
- 4-Bedroom + Study
- 4-Bedroom Deluxe

Schematic Chart

Blk 2 Bukit Batok St 41 S(657990)

UNIT/ LEVEL	01	02	03	04	05	06	07	08	09
16	A2L	A1	C6L	C5L	B2L	B2L	C5L	C4L	A2L
15	A2	A1	C6	C5	B2	B2	C5	C4	A2
14	A2	A1	C6	C5	B2	B2	C5	C4	A2
13	A2	A1	C6	C5	B2	B2	C5	C4	A2
12	A2	A1	C6	C5	B2	B2	C5	C4	A2
11	A2	A1	C6	C5	B2	B2	C5	C4	A2
10	A2	A1	C6	C5	B2	B2	C5	C4	A2
09	A2	A1	C6	C5	B2	B2	C5	C4	A2
08	A2	A1	C6	C5	B2	B2	C5	C4	A2
07	A2	A1	C6	C5	B2	B2	C5	C4	A2
06	A2	A1	C6	C5	B2	B2	C5	C4	A2
05	A2P	A1P	C6P	C5P	B2P	B2P	C5P	C4P	A2P

Blk 6 Bukit Batok St 41 S(657992)

UNIT/ LEVEL	10	11	12	13	14	15	16	17
16	B1L	C3L	C5L	B4L	B4L	D2L	C1L	A2L
15	B1	C3	C5	B4	B4	D2	C1	A2
14	B1	C3	C5	B4	B4	D2	C1	A2
13	B1	C3	C5	B4	B4	D2	C1	A2
12	B1	C3	C5	B4	B4	D2	C1	A2
11	B1	C3	C5	B4	B4	D2	C1	A2
10	B1	C2	C5	B4	B4	D2	C1	A2
09	B1	C2	C5	B4	B4	D2	C1	A2
08	B1	C2	C5	B4	B4	D2	C1	A2
07	B1	C2	C5	B4	B4	D2	C1	A2
06	B1	C2	C5	B4	B4	D2	C1	A2
05	B1P	C2P	C5P	B4P	B4P	D2P	C1P	A2P

Blk 8 Bukit Batok St 41 S(657993)

UNIT/ LEVEL	18	19	20	21	22	23	24	25
16	B1L	C3L	C5L	B4L	B3L	D2L	C1L	A2L
15	B1	C3	C5	B4	B3	D2	C1	A2
14	B1	C3	C5	B4	B3	D2	C1	A2
13	B1	C3	C5	B4	B3	D2	C1	A2
12	B1	C3	C5	B4	B3	D2	C1	A2
11	B1	C3	C5	B4	B3	D2	C1	A2
10	B1	C2	C5	B4	B3	D2	C1	A2
09	B1	C2	C5	B4	B3	D2	C1	A2
08	B1	C2	C5	B4	B3	D2	C1	A2
07	B1	C2	C5	B4	B3	D2	C1	A2
06	B1	C2	C5	B4	B3	D2	C1	A2
05	B1P	C2P	C5P	B4P	B3P	D2P	C1P	A2P












Blk 10 Bukit Batok St 41 S(657977)

UNIT/ LEVEL	26	27	28	29	30	31	32	33	34
16	A2L	A1	C3L	D1L	B3L	B3L	C5L	C4L	A2L
15	A2	A1	C3	D1	B3	B3	C5	C4	A2
14	A2	A1	C3	D1	B3	B3	C5	C4	A2
13	A2	A1	C3	D1	B3	B3	C5	C4	A2
12	A2	A1	C3	D1	B3	B3	C5	C4	A2
11	A2	A1	C3	D1	B3	B3	C5	C4	A2
10	A2	A1	C2	D1	B3	B3	C5	C4	A2
09	A2	A1	C2	D1	B3	B3	C5	C4	A2
08	A2	A1	C2	D1	B3	B3	C5	C4	A2
07	A2	A1	C2	D1	B3	B3	C5	C4	A2
06	A2	A1	C2	D1	B3	B3	C5	C4	A2
05	A2P	A1P	C2P	D1P	B3P	B3P	C5P	C4P	A2P

Blk 12 Bukit Batok St 41 S(657978)

UNIT/ LEVEL	35	36	37	38	39	40	41	42	43
16	A2L	A1	C3L	C6L	B3L	B3L	D1L	C4L	A2L
15	A2	A1	C3	C6	B3	B3	D1	C4	A2
14	A2	A1	C3	C6	B3	B3	D1	C4	A2
13	A2	A1	C3	C6	B3	B3	D1	C4	A2
12	A2	A1	C3	C6	B3	B3	D1	C4	A2
11	A2	A1	C3	C6	B3	B3	D1	C4	A2
10	A2	A1	C2	C6	B3	B3	D1	C4	A2
09	A2	A1	C2	C6	B3	B3	D1	C4	A2
08	A2	A1	C2	C6	B3	B3	D1	C4	A2
07	A2	A1	C2	C6	B3	B3	D1	C4	A2
06	A2	A1	C2	C6	B3	B3	D1	C4	A2
05	A2P	A1P	C2P	C6P	B3P	B3P	D1P	C4P	A2P

LEGEND

	Studio + Study		3-Bedroom
	1-Bedroom + Study		3-Bedroom Suite
	2-Bedroom		3-Bedroom Premium
	2-Bedroom Premium		3-Bedroom Deluxe
	2-Bedroom Deluxe + Study		4-Bedroom + Study
			4-Bedroom Deluxe

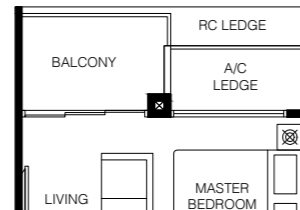
Studio + Study

1-Bedroom + Study

Type A1

40 sq.m. / 431 sq.ft.

BLK 2	BLK 10	BLK 12
#06-02	#06-27	#06-36
#09-02	#09-27	#09-36
#12-02	#12-27	#12-36
#15-02	#15-27	#15-36

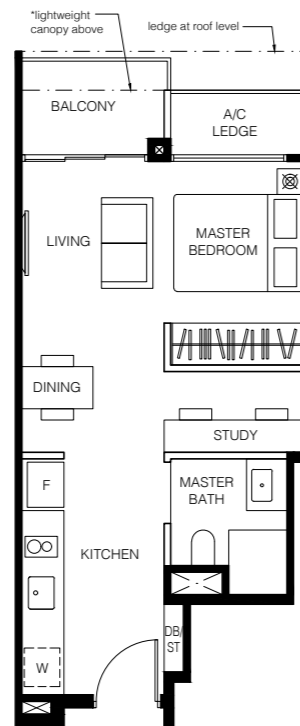


Type A1

40 sq.m. / 431 sq.ft.

BLK 2	BLK 10	BLK 12
#07-02	#07-27	#07-36
#08-02	#08-27	#08-36
#10-02	#10-27	#10-36
#11-02	#11-27	#11-36
#13-02	#13-27	#13-36
#14-02	#14-27	#14-36
#16-02*	#16-27*	#16-36*

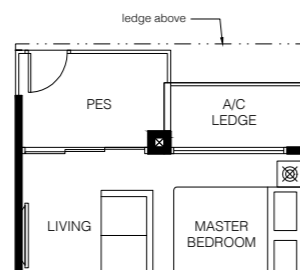
*Note: Units with lightweight canopy over balcony



Type A1P

40 sq.m. / 431 sq.ft.

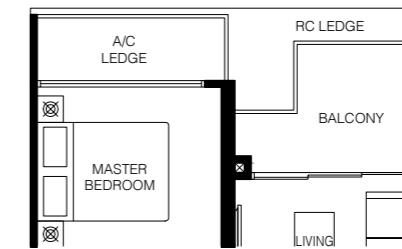
BLK 2	BLK 10	BLK 12
#05-02	#05-27	#05-36



Type A2

46 sq.m. / 495 sq.ft.

BLK 2	BLK 10	BLK 12
#06-01	#06-26	#06-35
#09-01	#09-26	#09-35
#12-01	#12-26	#12-35
#15-01	#15-26	#15-35



MIRRORED

BLK 2	BLK 6	BLK 8
#06-09	#06-17	#06-25
#09-09	#09-17	#09-25
#12-09	#12-17	#12-25
#15-09	#15-17	#15-25

BLK 10	BLK 12
#06-34	#06-43
#09-34	#09-43
#12-34	#12-43
#15-34	#15-43

Type A2

46 sq.m. / 495 sq.ft.

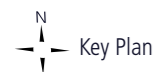
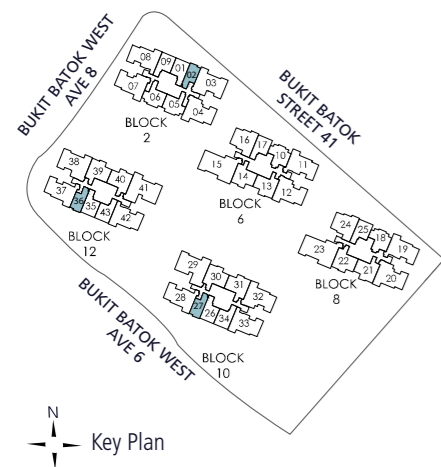
BLK 2	BLK 10	BLK 12
#07-01	#07-26	#07-35
#08-01	#08-26	#08-35
#10-01	#10-26	#10-35
#11-01	#11-26	#11-35
#13-01	#13-26	#13-35
#14-01	#14-26	#14-35



MIRRORED

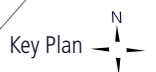
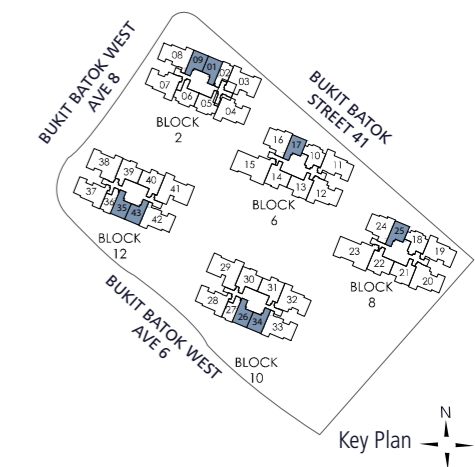
BLK 2	BLK 6	BLK 8
#07-09	#07-17	#07-25
#08-09	#08-17	#08-25
#10-09	#10-17	#10-25
#11-09	#11-17	#11-25
#13-09	#13-17	#13-25
#14-09	#14-17	#14-25

BLK 10	BLK 12
#07-34	#07-43
#08-34	#08-43
#10-34	#10-43
#11-34	#11-43
#13-34	#13-43
#14-34	#14-43



LEGEND
 DB/ST: Distribution Board/Store
 W: Washer cum Dryer
 F: Fridge
 WC: Water Closet
 Wall not to be hacked/altered (including by way of drilling)

The above plans and illustration are subject to change as may be required or approved by the relevant authorities. All areas stated herein include PES (private enclosed space), balcony, A/C ledge and void where applicable. All areas and measurements stated herein are approximate and subject to adjustment on final survey. Please refer to the key plan for orientation.



LEGEND
 DB/ST: Distribution Board/Store
 W: Washer cum Dryer
 F: Fridge
 WC: Water Closet
 Wall not to be hacked/altered (including by way of drilling)

The above plans and illustration are subject to change as may be required or approved by the relevant authorities. All areas stated herein include PES (private enclosed space), balcony, A/C ledge and void where applicable. All areas and measurements stated herein are approximate and subject to adjustment on final survey. Please refer to the key plan for orientation.

1-Bedroom + Study

Type A2P

46 sq.m. / 495 sq.ft.

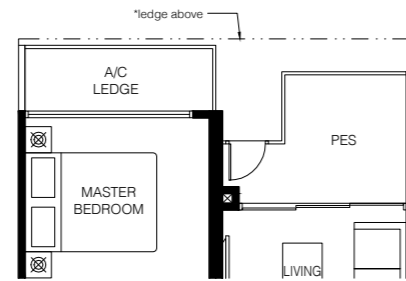
BLK 2 **BLK 10** **BLK 12**
 #05-01 #05-26 #05-35

MIRRORED

BLK 2 **BLK 6** **BLK 8**
 #05-09* #05-17* #05-25*

BLK 10 **BLK 12**
 #05-34* #05-43*

*Note: Units with ledge above A/C ledge and PES



Type A2L

57 sq.m. / 614 sq.ft.

Including strata void area of 10.8 sq.m. / 116 sq.ft. above living and dining. Approximate 4.5m floor to ceiling height at living and dining.

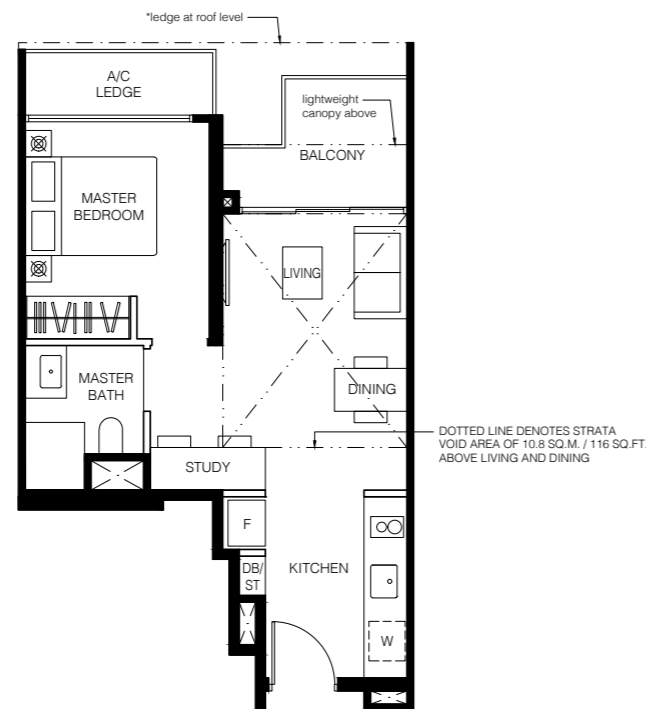
BLK 2 **BLK 10** **BLK 12**
 #16-01 #16-26 #16-35

MIRRORED

BLK 2 **BLK 6** **BLK 8**
 #16-09* #16-17* #16-25*

BLK 10 **BLK 12**
 #16-34* #16-43*

*Note: Units with ledge at roof level

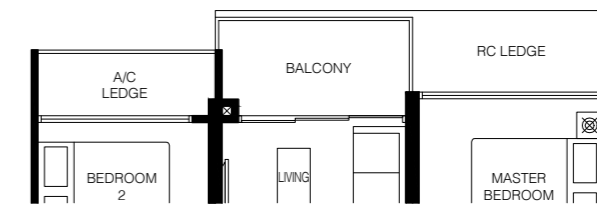


2-Bedroom

Type B1

55 sq.m. / 592 sq.ft.

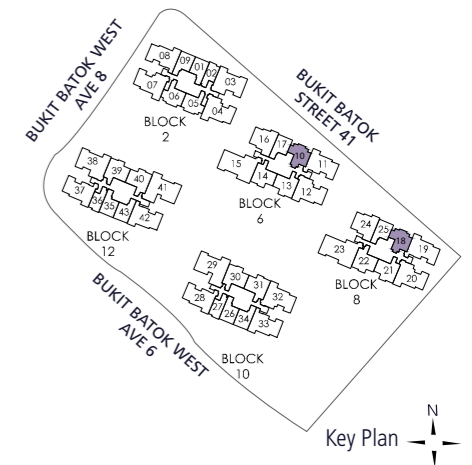
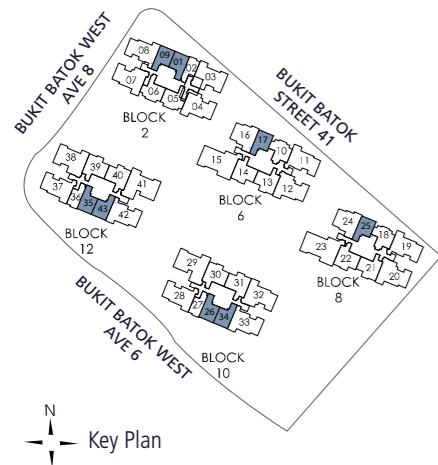
BLK 6 **BLK 8**
 #06-10 #06-18
 #09-10 #09-18
 #12-10 #12-18
 #15-10 #15-18



Type B1

55 sq.m. / 592 sq.ft.

BLK 6 **BLK 8**
 #07-10 #07-18
 #08-10 #08-18
 #10-10 #10-18
 #11-10 #11-18
 #13-10 #13-18
 #14-10 #14-18



LEGEND
 DB/ST: Distribution Board/Store F: Fridge Wall not to be hacked/altered (including by way of drilling)
 W: Washer cum Dryer WC: Water Closet

LEGEND
 DB/ST: Distribution Board/Store F: Fridge Wall not to be hacked/altered (including by way of drilling)
 W: Washer cum Dryer WC: Water Closet

The above plans and illustration are subject to change as may be required or approved by the relevant authorities. All areas stated herein include PES (private enclosed space), balcony, A/C ledge and void where applicable. All areas and measurements stated herein are approximate and subject to adjustment on final survey. Please refer to the key plan for orientation.

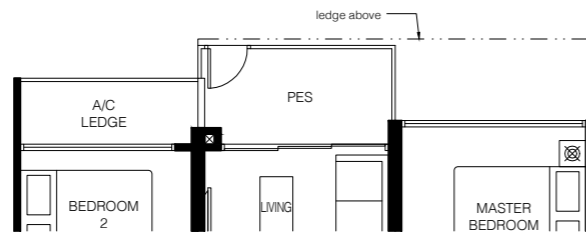
The above plans and illustration are subject to change as may be required or approved by the relevant authorities. All areas stated herein include PES (private enclosed space), balcony, A/C ledge and void where applicable. All areas and measurements stated herein are approximate and subject to adjustment on final survey. Please refer to the key plan for orientation.

2-Bedroom

Type B1P

55 sq.m. / 592 sq.ft.

BLK 6 **BLK 8**
#05-10 #05-18

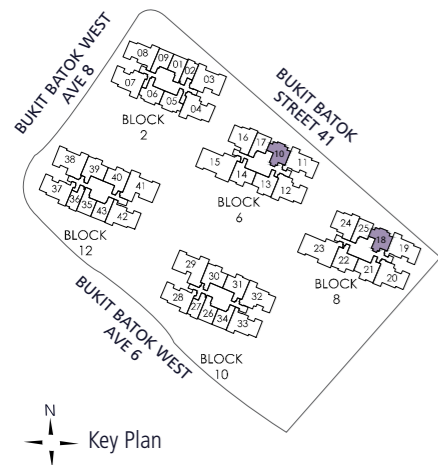
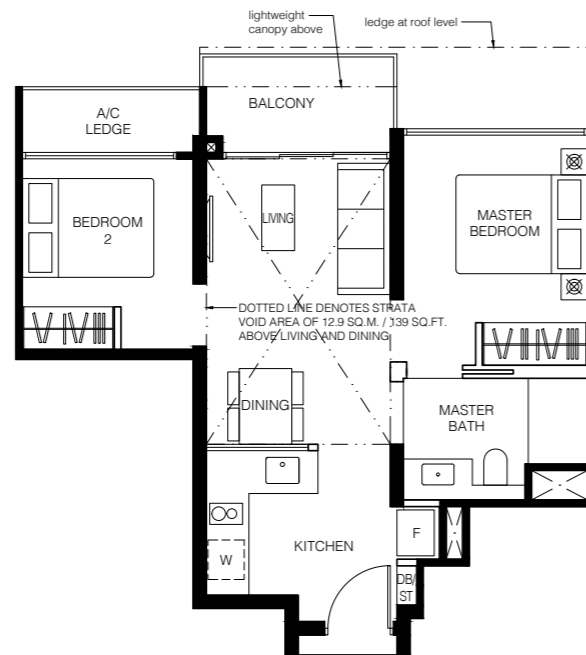


Type B1L

68 sq.m. / 732 sq.ft.

Including strata void area of 12.9 sq.m. / 139 sq.ft. above living and dining. Approximate 4.5m floor to ceiling height at living and dining.

BLK 6 **BLK 8**
#16-10 #16-18



LEGEND

DB/ST: Distribution Board/Store F: Fridge Wall not to be hacked/alterd (including by way of drilling)
W: Washer cum Dryer WC: Water Closet



2-Bedroom

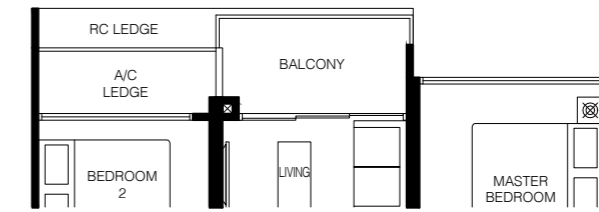
Type B2

57 sq.m. / 614 sq.ft.

BLK 2
#06-05
#09-05
#12-05
#15-05

MIRRORED

BLK 2
#06-06
#09-06
#12-06
#15-06



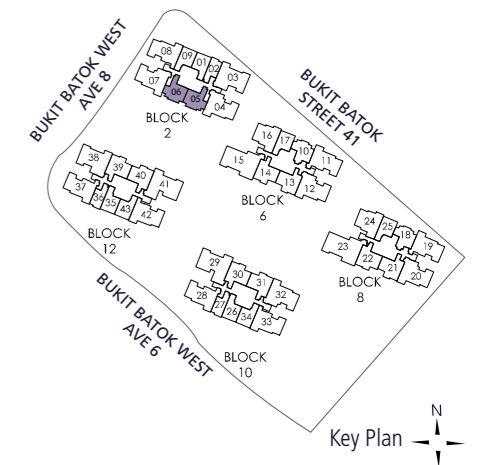
Type B2

57 sq.m. / 614 sq.ft.

BLK 2
#07-05
#08-05
#10-05
#11-05
#13-05
#14-05

MIRRORED

BLK 2
#07-06
#08-06
#10-06
#11-06
#13-06
#14-06



LEGEND

DB/ST: Distribution Board/Store F: Fridge Wall not to be hacked/alterd (including by way of drilling)
W: Washer cum Dryer WC: Water Closet



The above plans and illustration are subject to change as may be required or approved by the relevant authorities. All areas stated herein include PES (private enclosed space), balcony, A/C ledge and void where applicable. All areas and measurements stated herein are approximate and subject to adjustment on final survey. Please refer to the key plan for orientation.

The above plans and illustration are subject to change as may be required or approved by the relevant authorities. All areas stated herein include PES (private enclosed space), balcony, A/C ledge and void where applicable. All areas and measurements stated herein are approximate and subject to adjustment on final survey. Please refer to the key plan for orientation.

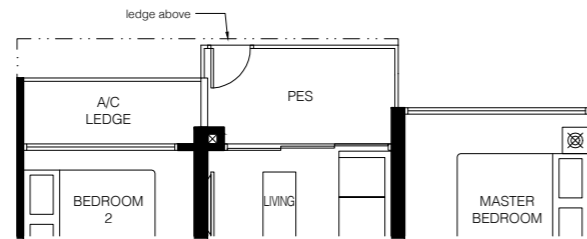
2-Bedroom

Type B2P

57 sq.m. / 614 sq.ft.

BLK 2
#05-05

MIRRORED
BLK 2
#05-06



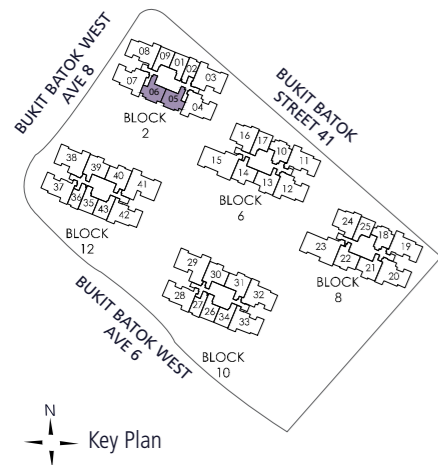
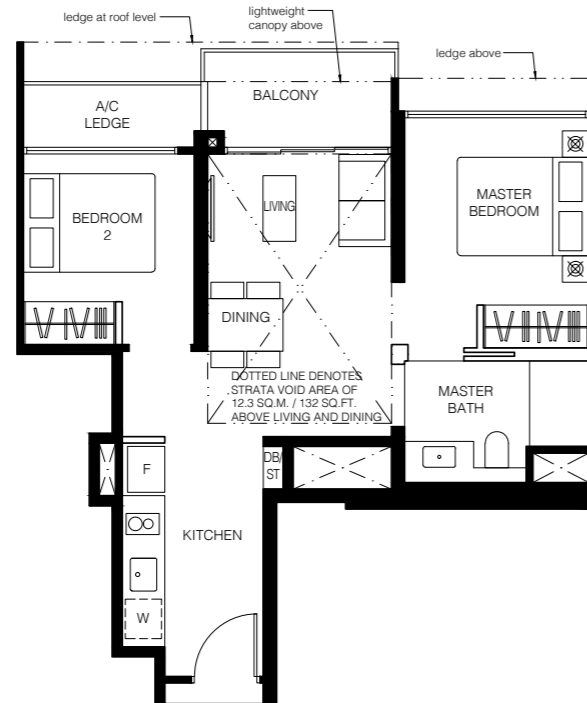
Type B2L

69 sq.m. / 743 sq.ft.

Including strata void area of 12.3 sq.m. / 132 sq.ft. above living and dining. Approximate 4.5m floor to ceiling height at living and dining.

BLK 2
#16-05

MIRRORED
BLK 2
#16-06



LEGEND

DB/ST: Distribution Board/Store
W: Washer cum Dryer
F: Fridge
WC: Water Closet
Wall not to be hacked/alterd (including by way of drilling)

The above plans and illustration are subject to change as may be required or approved by the relevant authorities. All areas stated herein include PES (private enclosed space), balcony, A/C ledge and void where applicable. All areas and measurements stated herein are approximate and subject to adjustment on final survey. Please refer to the key plan for orientation.

2-Bedroom Premium

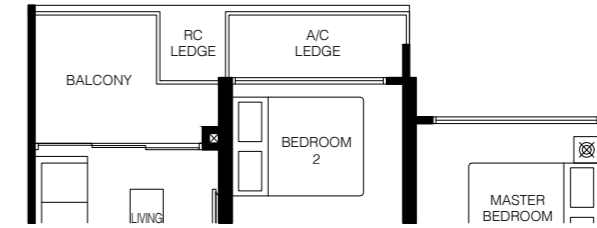
Type B3

65 sq.m. / 700 sq.ft.

BLK 10 #06-30 #09-30 #12-30 #15-30
BLK 12 #06-39 #09-39 #12-39 #15-39

MIRRORED

BLK 8 #06-22 #09-22 #12-22 #15-22
BLK 10 #06-31 #09-31 #12-31 #15-31
BLK 12 #06-40 #09-40 #12-40 #15-40



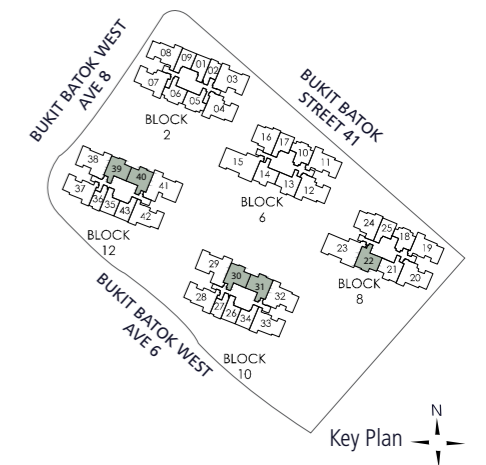
Type B3

65 sq.m. / 700 sq.ft.

BLK 10 #07-30 #08-30 #10-30 #11-30 #13-30 #14-30
BLK 12 #07-39 #08-39 #10-39 #11-39 #13-39 #14-39

MIRRORED

BLK 8 #07-22 #08-22 #10-22 #11-22 #13-22 #14-22
BLK 10 #07-31 #08-31 #10-31 #11-31 #13-31 #14-31
BLK 12 #07-40 #08-40 #10-40 #11-40 #13-40 #14-40



LEGEND

DB/ST: Distribution Board/Store
W: Washer cum Dryer
F: Fridge
WC: Water Closet
Wall not to be hacked/alterd (including by way of drilling)

The above plans and illustration are subject to change as may be required or approved by the relevant authorities. All areas stated herein include PES (private enclosed space), balcony, A/C ledge and void where applicable. All areas and measurements stated herein are approximate and subject to adjustment on final survey. Please refer to the key plan for orientation.

2-Bedroom Premium

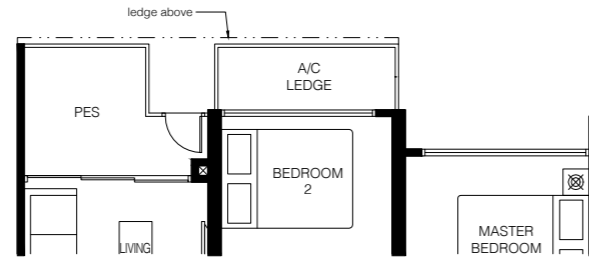
Type B3P

65 sq.m. / 700 sq.ft.

BLK 10 **BLK 12**
#05-30 #05-39

MIRRORED

BLK 8 **BLK 10** **BLK 12**
#05-22 #05-31 #05-40



Type B3L

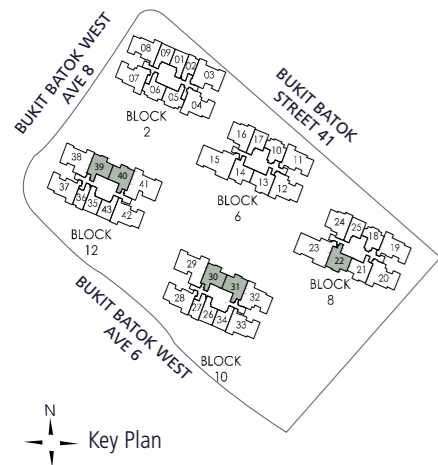
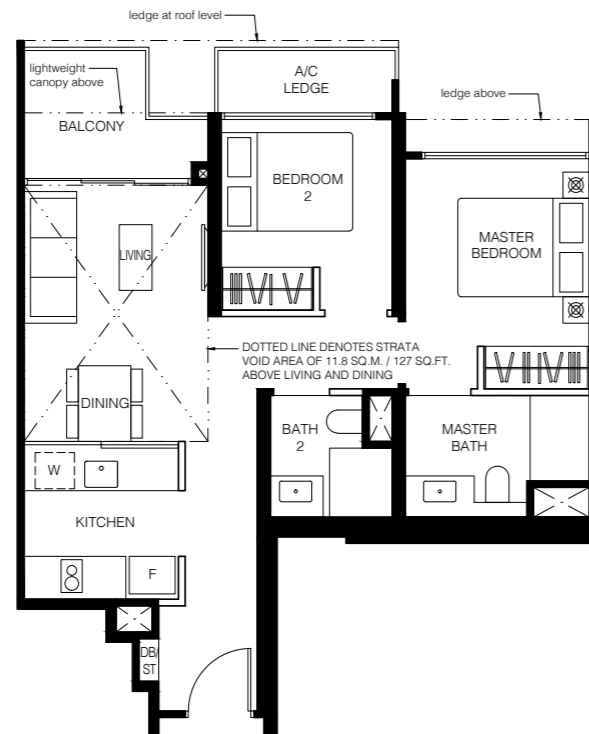
77 sq.m. / 829 sq.ft.

Including strata void area of 11.8 sq.m. / 127 sq.ft. above living and dining. Approximate 4.5m floor to ceiling height at living and dining.

BLK 10 **BLK 12**
#16-30 #16-39

MIRRORED

BLK 8 **BLK 10** **BLK 12**
#16-22 #16-31 #16-40



LEGEND

DB/ST: Distribution Board/Store F: Fridge
W: Washer cum Dryer WC: Water Closet (including by way of drilling) Wall not to be hacked/altered (including by way of drilling)



2-Bedroom Deluxe + Study

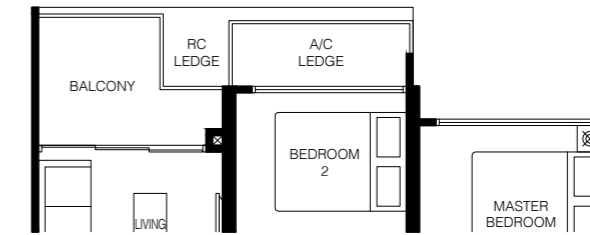
Type B4

66 sq.m. / 710 sq.ft.

BLK 6 **BLK 8**
#06-13 #06-21
#09-13 #09-21
#12-13 #12-21
#15-13 #15-21

MIRRORED

BLK 6
#06-14
#09-14
#12-14
#15-14



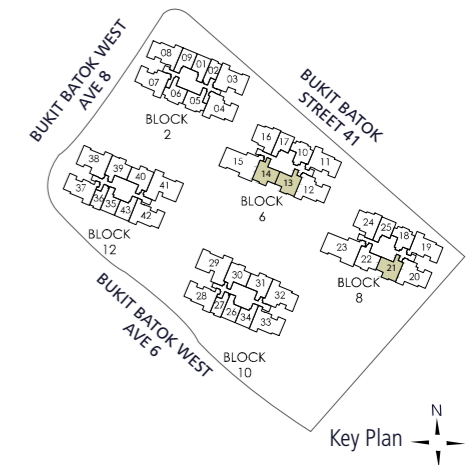
Type B4

66 sq.m. / 710 sq.ft.

BLK 6 **BLK 8**
#07-13 #07-21
#08-13 #08-21
#10-13 #10-21
#11-13 #11-21
#13-13 #13-21
#14-13 #14-21

MIRRORED

BLK 6
#07-14
#08-14
#10-14
#11-14
#13-14
#14-14



LEGEND

DB/ST: Distribution Board/Store F: Fridge
W: Washer cum Dryer WC: Water Closet (including by way of drilling) Wall not to be hacked/altered (including by way of drilling)



The above plans and illustration are subject to change as may be required or approved by the relevant authorities. All areas stated herein include PES (private enclosed space), balcony, A/C ledge and void where applicable. All areas and measurements stated herein are approximate and subject to adjustment on final survey. Please refer to the key plan for orientation.

The above plans and illustration are subject to change as may be required or approved by the relevant authorities. All areas stated herein include PES (private enclosed space), balcony, A/C ledge and void where applicable. All areas and measurements stated herein are approximate and subject to adjustment on final survey. Please refer to the key plan for orientation.

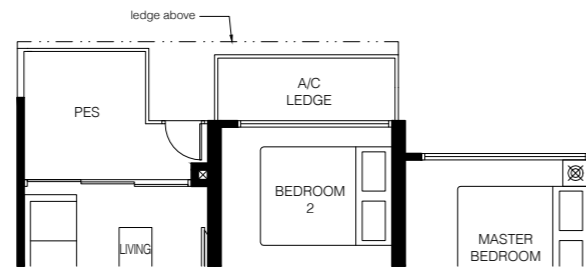
2-Bedroom Deluxe + Study

Type B4P

66 sq.m. / 710 sq.ft.

BLK 6 **BLK 8**
#05-13 #05-21

MIRRORED
BLK 6
#05-14



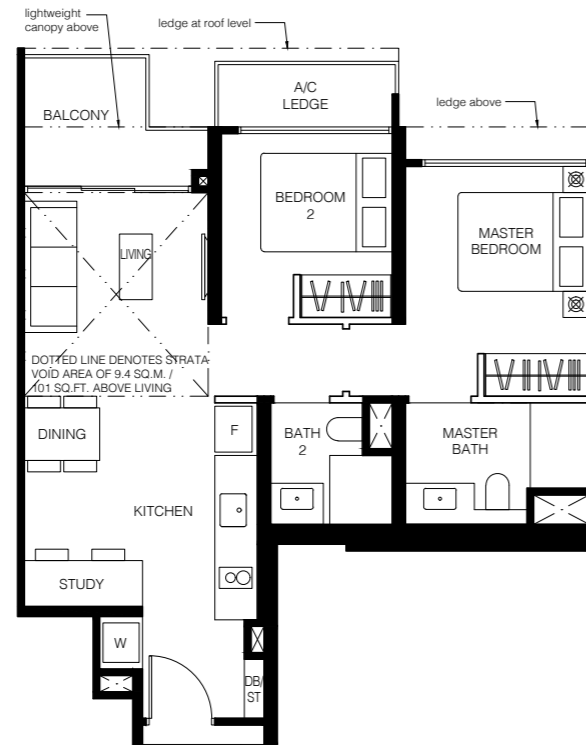
Type B4L

75 sq.m. / 807 sq.ft.

Including strata void area of 9.4 sq.m. / 101 sq.ft. above living. Approximate 4.5m floor to ceiling height at living.

BLK 6 **BLK 8**
#16-13 #16-21

MIRRORED
BLK 6
#16-14

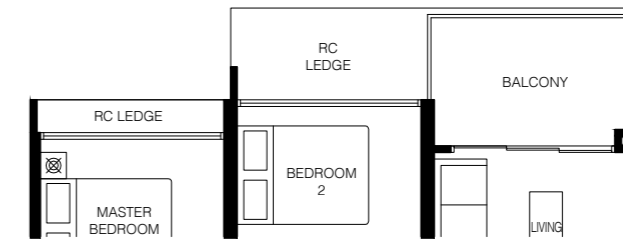


3-Bedroom

Type C1

76 sq.m. / 818 sq.ft.

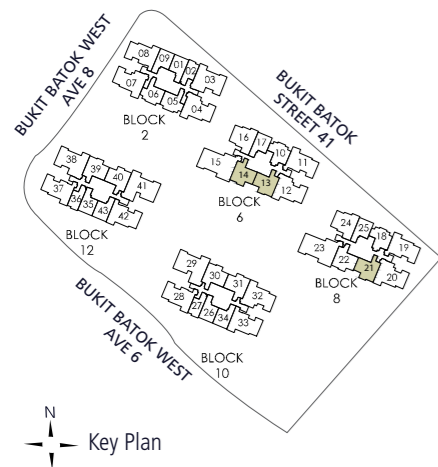
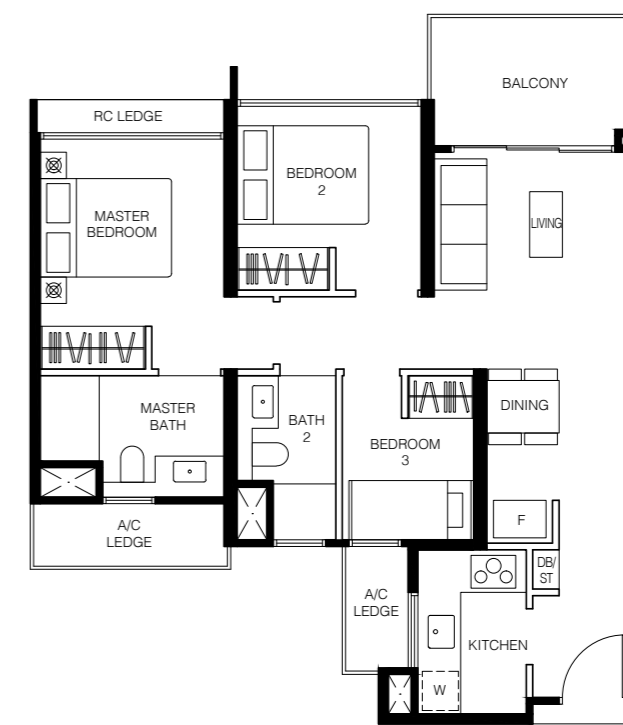
BLK 6 **BLK 8**
#06-16 #06-24
#09-16 #09-24
#12-16 #12-24
#15-16 #15-24



Type C1

76 sq.m. / 818 sq.ft.

BLK 6 **BLK 8**
#07-16 #07-24
#08-16 #08-24
#10-16 #10-24
#11-16 #11-24
#13-16 #13-24
#14-16 #14-24

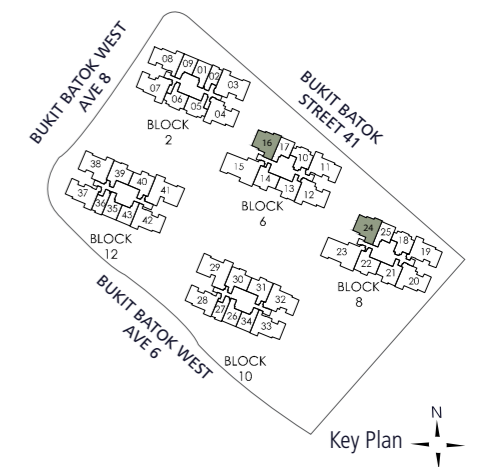


Key Plan

LEGEND

DB/ST: Distribution Board/Store
W: Washer cum Dryer
F: Fridge
WC: Water Closet
Wall not to be hacked/alterd (including by way of drilling)

The above plans and illustration are subject to change as may be required or approved by the relevant authorities. All areas stated herein include PES (private enclosed space), balcony, A/C ledge and void where applicable. All areas and measurements stated herein are approximate and subject to adjustment on final survey. Please refer to the key plan for orientation.



Key Plan

LEGEND

DB/ST: Distribution Board/Store
W: Washer cum Dryer
F: Fridge
WC: Water Closet
Wall not to be hacked/alterd (including by way of drilling)

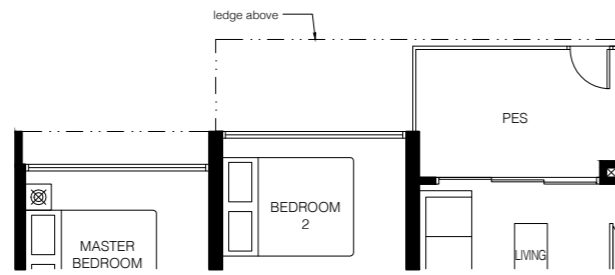
The above plans and illustration are subject to change as may be required or approved by the relevant authorities. All areas stated herein include PES (private enclosed space), balcony, A/C ledge and void where applicable. All areas and measurements stated herein are approximate and subject to adjustment on final survey. Please refer to the key plan for orientation.

3-Bedroom

Type C1P

76 sq.m. / 818 sq.ft.

BLK 6 **BLK 8**
#05-16 #05-24

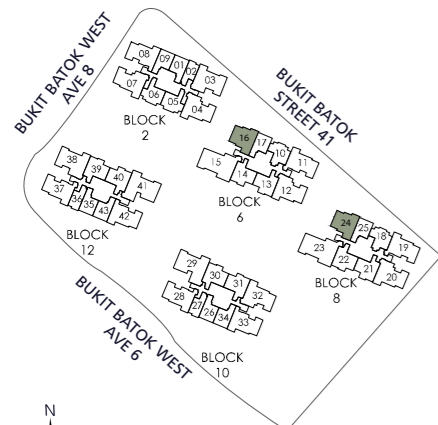
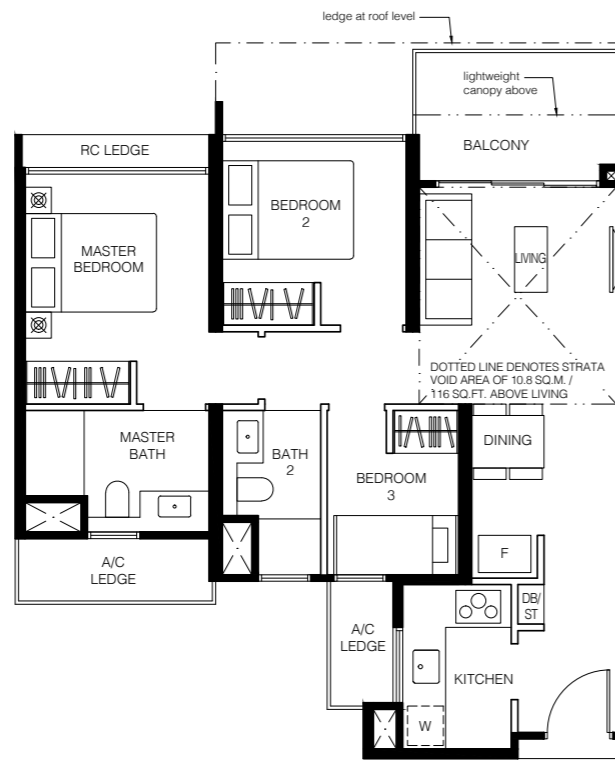


Type C1L

87 sq.m. / 936 sq.ft.

Including strata void area of 10.8 sq.m. / 116 sq.ft. above living. Approximate 4.5m floor to ceiling height at living.

BLK 6 **BLK 8**
#16-16 #16-24



LEGEND

DB/ST: Distribution Board/Store F: Fridge Wall not to be hacked/altered (including by way of drilling)
W: Washer cum Dryer WC: Water Closet

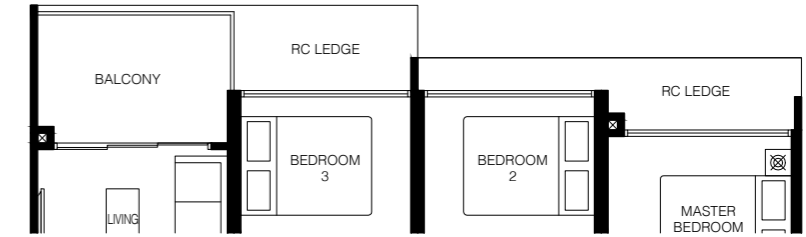
The above plans and illustration are subject to change as may be required or approved by the relevant authorities. All areas stated herein include PES (private enclosed space), balcony, A/C ledge and void where applicable. All areas and measurements stated herein are approximate and subject to adjustment on final survey. Please refer to the key plan for orientation.

3-Bedroom Suite

Type C2

82 sq.m. / 883 sq.ft.

BLK 6 **BLK 8**
#06-11 #06-19
#09-11 #09-19



Type C2

82 sq.m. / 883 sq.ft.

BLK 6 **BLK 8**
#07-11 #07-19
#08-11 #08-19
#10-11 #10-19

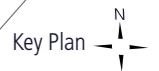
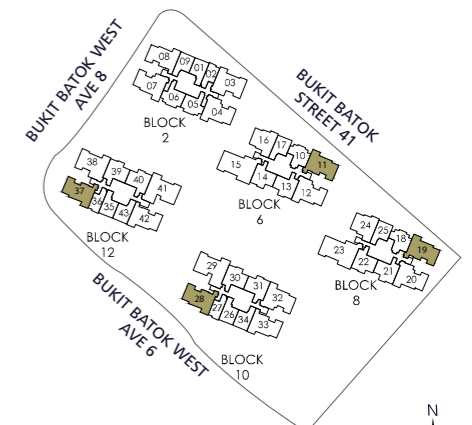
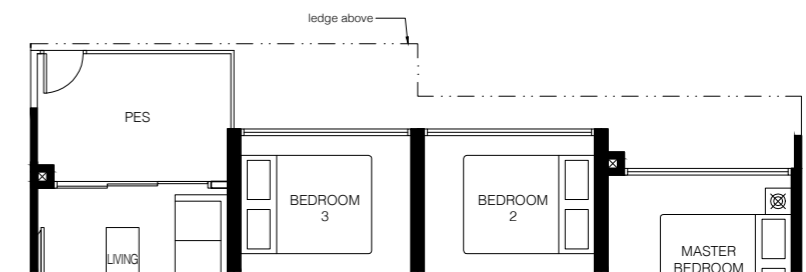


Type C2P

82 sq.m. / 883 sq.ft.

BLK 6 **BLK 8**
#05-11 #05-19

BLK 10 **BLK 12**
#05-28 #05-37



LEGEND

DB/ST: Distribution Board/Store F: Fridge Wall not to be hacked/altered (including by way of drilling)
W: Washer cum Dryer WC: Water Closet

The above plans and illustration are subject to change as may be required or approved by the relevant authorities. All areas stated herein include PES (private enclosed space), balcony, A/C ledge and void where applicable. All areas and measurements stated herein are approximate and subject to adjustment on final survey. Please refer to the key plan for orientation.

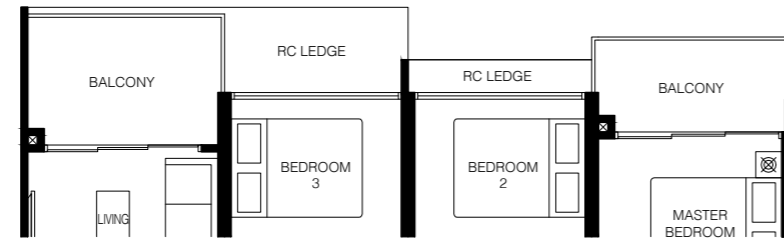
3-Bedroom Premium

Type C3

87 sq.m. / 936 sq.ft.

BLK 6 **BLK 8**
 #12-11 #12-19
 #15-11 #15-19

BLK 10 **BLK 12**
 #12-28 #12-37
 #15-28 #15-37



Type C3

87 sq.m. / 936 sq.ft.

BLK 6 **BLK 8**
 #11-11 #11-19
 #13-11 #13-19
 #14-11 #14-19

BLK 10 **BLK 12**
 #11-28 #11-37
 #13-28 #13-37
 #14-28 #14-37



3-Bedroom Premium

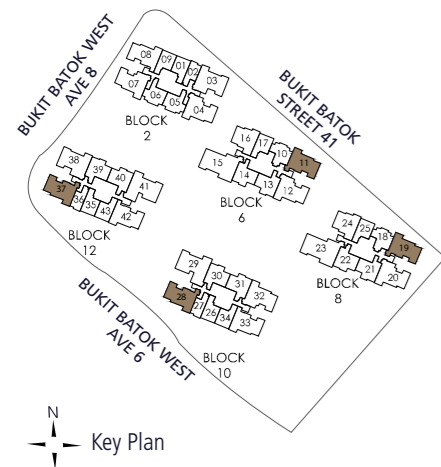
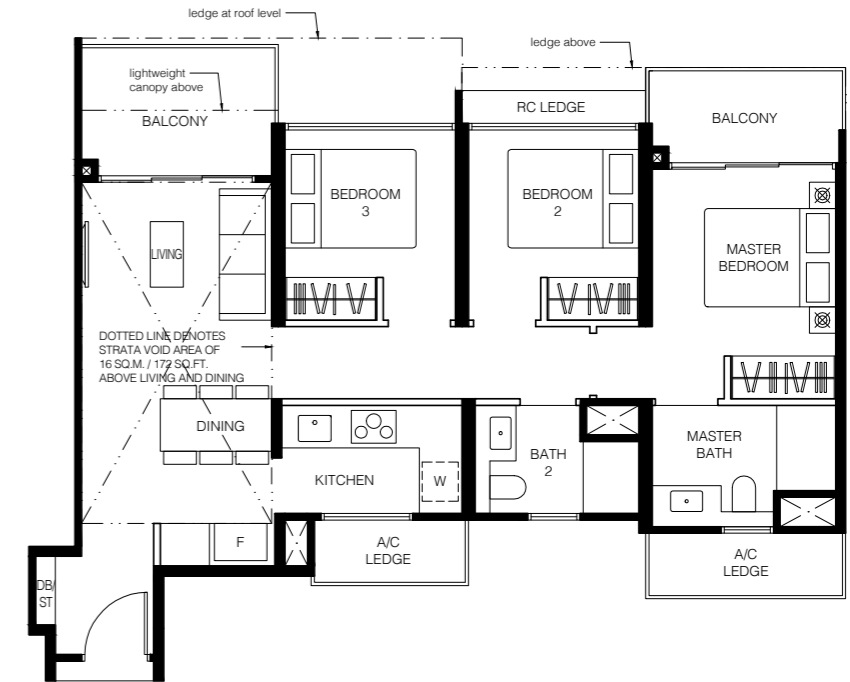
Type C3L

103 sq.m. / 1109 sq.ft.

Including strata void area of 16.0 sq.m. / 172 sq.ft. above living and dining. Approximate 4.5m floor to ceiling height at living and dining.

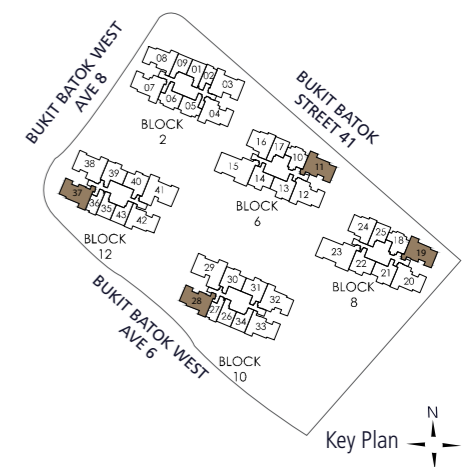
BLK 6 **BLK 8**
 #16-11 #16-19

BLK 10 **BLK 12**
 #16-28 #16-37



LEGEND
 DB/ST: Distribution Board/Store F: Fridge Wall not to be hacked/alterd (including by way of drilling)
 W: Washer cum Dryer WC: Water Closet

The above plans and illustration are subject to change as may be required or approved by the relevant authorities. All areas stated herein include PES (private enclosed space), balcony, A/C ledge and void where applicable. All areas and measurements stated herein are approximate and subject to adjustment on final survey. Please refer to the key plan for orientation.



LEGEND
 DB/ST: Distribution Board/Store F: Fridge Wall not to be hacked/alterd (including by way of drilling)
 W: Washer cum Dryer WC: Water Closet

The above plans and illustration are subject to change as may be required or approved by the relevant authorities. All areas stated herein include PES (private enclosed space), balcony, A/C ledge and void where applicable. All areas and measurements stated herein are approximate and subject to adjustment on final survey. Please refer to the key plan for orientation.

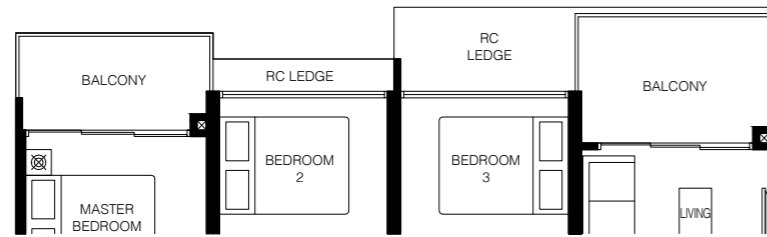
3-Bedroom Premium

Type C4

87 sq.m. / 936 sq.ft.

BLK 2 #06-08
BLK 10 #06-33
 #09-08 #09-33
 #12-08 #12-33
 #15-08 #15-33

BLK 12
 #06-42
 #09-42
 #12-42
 #15-42

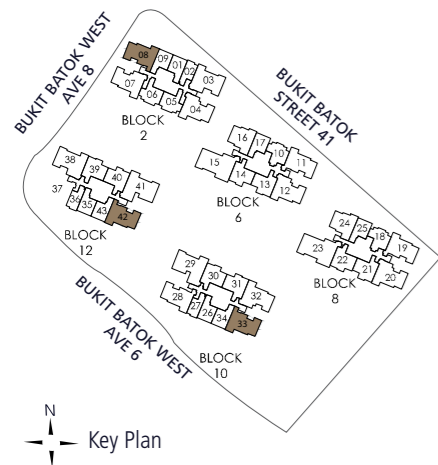


Type C4

87 sq.m. / 936 sq.ft.

BLK 2 #07-08
BLK 10 #07-33
 #08-08 #08-33
 #10-08 #10-33
 #11-08 #11-33
 #13-08 #13-33
 #14-08 #14-33

BLK 12
 #07-42
 #08-42
 #10-42
 #11-42
 #13-42
 #14-42



LEGEND
 DB/ST: Distribution Board/Store
 W: Washer cum Dryer
 F: Fridge
 WC: Water Closet
 Wall not to be hacked/alterd (including by way of drilling)



Key Plan

The above plans and illustration are subject to change as may be required or approved by the relevant authorities. All areas stated herein include PES (private enclosed space), balcony, A/C ledge and void where applicable. All areas and measurements stated herein are approximate and subject to adjustment on final survey. Please refer to the key plan for orientation.

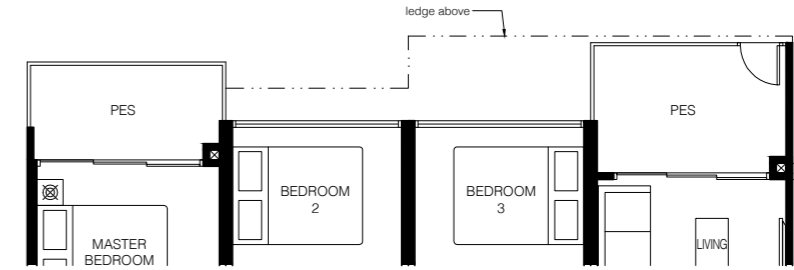
3-Bedroom Premium

Type C4P

87 sq.m. / 936 sq.ft.

BLK 2 #05-08
BLK 10 #05-33

BLK 12
 #05-42



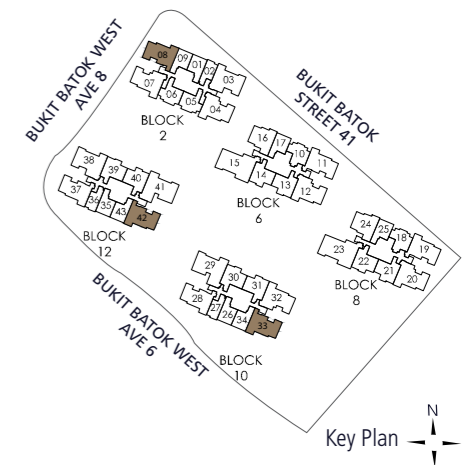
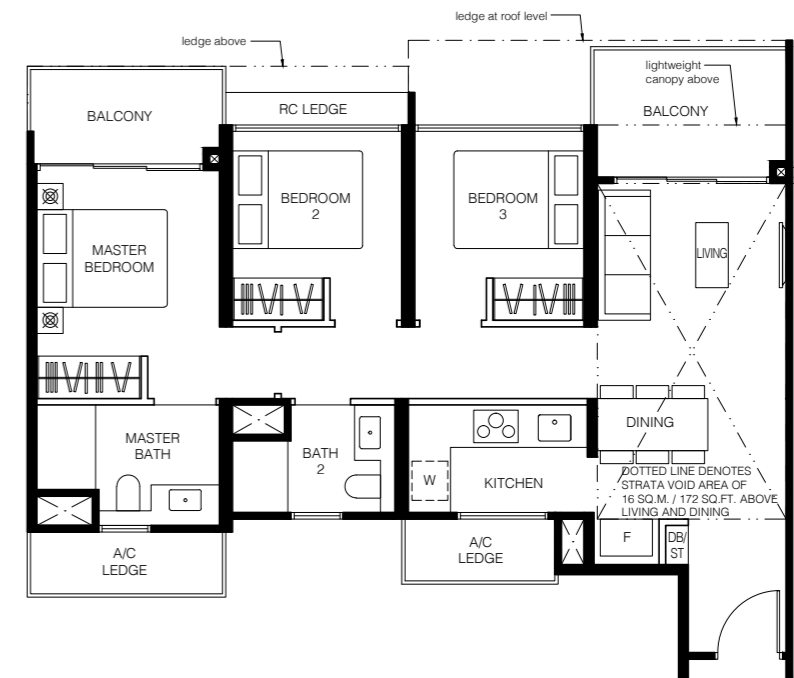
Type C4L

103 sq.m. / 1109 sq.ft.

Including strata void area of 16 sq.m. / 172 sq.ft. above living and dining. Approximate 4.5m floor to ceiling height at living and dining.

BLK 2 #16-08
BLK 10 #16-33

BLK 12
 #16-42



LEGEND
 DB/ST: Distribution Board/Store
 W: Washer cum Dryer
 F: Fridge
 WC: Water Closet
 Wall not to be hacked/alterd (including by way of drilling)



Key Plan

The above plans and illustration are subject to change as may be required or approved by the relevant authorities. All areas stated herein include PES (private enclosed space), balcony, A/C ledge and void where applicable. All areas and measurements stated herein are approximate and subject to adjustment on final survey. Please refer to the key plan for orientation.

3-Bedroom Deluxe

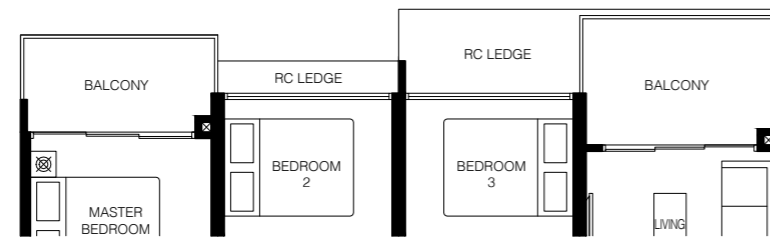
Type C5

91 sq.m. / 980 sq.ft.

BLK 2	BLK 6	BLK 8
#06-04	#06-12	#06-20
#09-04	#09-12	#09-20
#12-04	#12-12	#12-20
#15-04	#15-12	#15-20

MIRRORED

BLK 2	BLK 10
#06-07	#06-32
#09-07	#09-32
#12-07	#12-32
#15-07	#15-32



Type C5

91 sq.m. / 980 sq.ft.

BLK 2	BLK 6	BLK 8
#07-04	#07-12	#07-20
#08-04	#08-12	#08-20
#10-04	#10-12	#10-20
#11-04	#11-12	#11-20
#13-04	#13-12	#13-20
#14-04	#14-12	#14-20

MIRRORED

BLK 2	BLK 10
#07-07	#07-32
#08-07	#08-32
#10-07	#10-32
#11-07	#11-32
#13-07	#13-32
#14-07	#14-32



3-Bedroom Deluxe

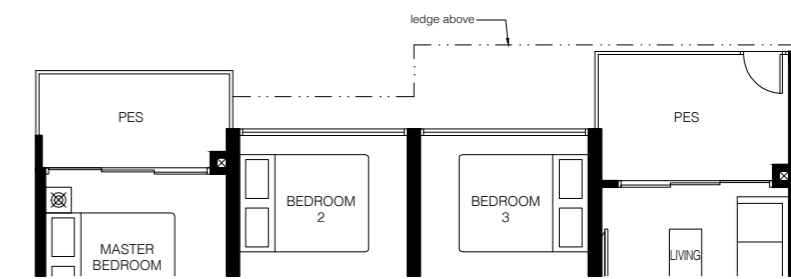
Type C5P

91 sq.m. / 980 sq.ft.

BLK 2	BLK 6	BLK 8
#05-04	#05-12	#05-20

MIRRORED

BLK 2	BLK 10
#05-07	#05-32



Type C5L

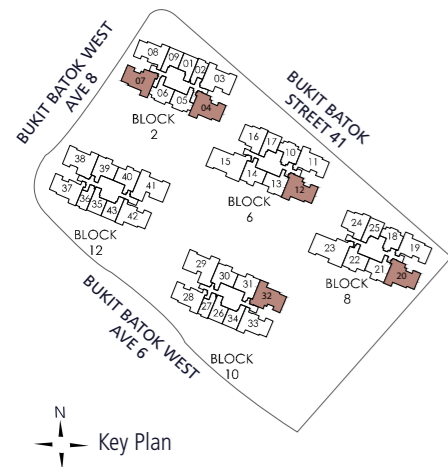
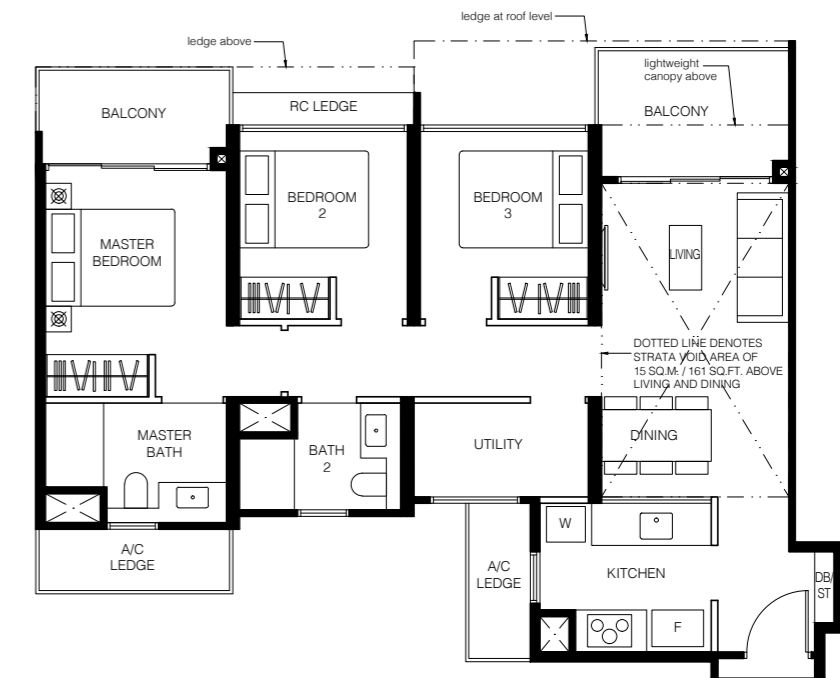
106 sq.m. / 1141 sq.ft.

Including strata void area of 15 sq.m. / 161 sq.ft. above living and dining. Approximate 4.5m floor to ceiling height at living and dining.

BLK 2	BLK 6	BLK 8
#16-04	#16-12	#16-20

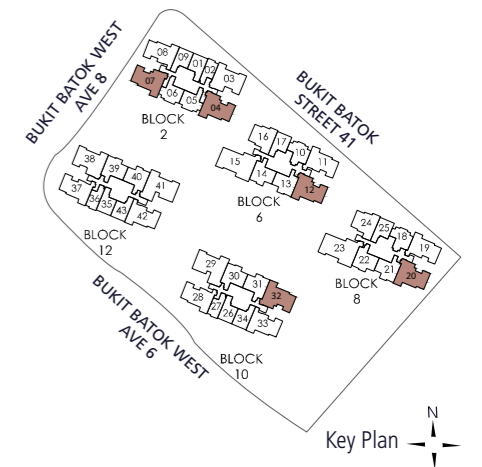
MIRRORED

BLK 2	BLK 10
#16-07	#16-32



LEGEND

DB/ST: Distribution Board/Store
 W: Washer cum Dryer
 F: Fridge
 WC: Water Closet
 Wall not to be hacked/alterd (including by way of drilling)



LEGEND

DB/ST: Distribution Board/Store
 W: Washer cum Dryer
 F: Fridge
 WC: Water Closet
 Wall not to be hacked/alterd (including by way of drilling)

The above plans and illustration are subject to change as may be required or approved by the relevant authorities. All areas stated herein include PES (private enclosed space), balcony, A/C ledge and void where applicable. All areas and measurements stated herein are approximate and subject to adjustment on final survey. Please refer to the key plan for orientation.

The above plans and illustration are subject to change as may be required or approved by the relevant authorities. All areas stated herein include PES (private enclosed space), balcony, A/C ledge and void where applicable. All areas and measurements stated herein are approximate and subject to adjustment on final survey. Please refer to the key plan for orientation.

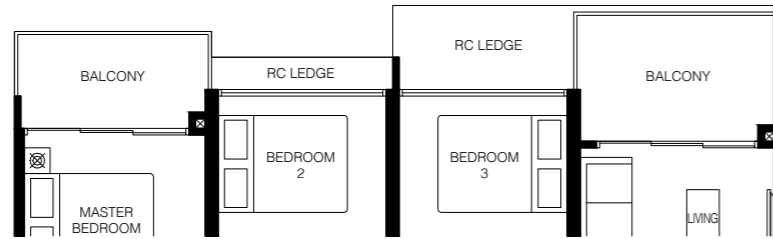
3-Bedroom Deluxe

Type C6

95 sq.m. / 1023 sq.ft.

BLK 12
#06-38
#09-38
#12-38
#15-38

MIRRORED
BLK 2
#06-03
#09-03
#12-03
#15-03

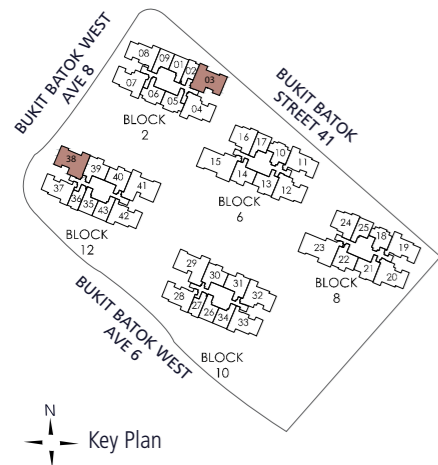


Type C6

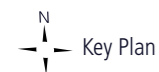
95 sq.m. / 1023 sq.ft.

BLK 12
#07-38
#08-38
#10-38
#11-38
#13-38
#14-38

MIRRORED
BLK 2
#07-03
#08-03
#10-03
#11-03
#13-03
#14-03



LEGEND
DB/ST: Distribution Board/Store
W: Washer cum Dryer
F: Fridge
WC: Water Closet
Wall not to be hacked/altered (including by way of drilling)



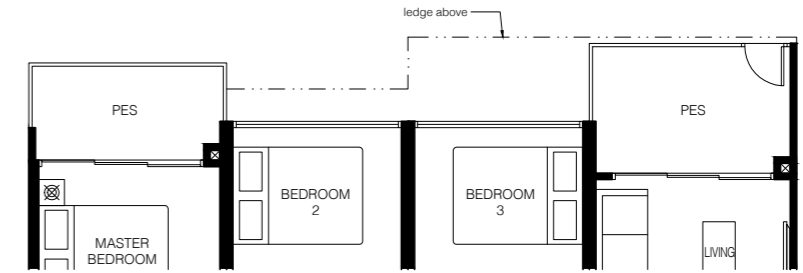
The above plans and illustration are subject to change as may be required or approved by the relevant authorities. All areas stated herein include PES (private enclosed space), balcony, A/C ledge and void where applicable. All areas and measurements stated herein are approximate and subject to adjustment on final survey. Please refer to the key plan for orientation.

3-Bedroom Deluxe

Type C6P

95 sq.m. / 1023 sq.ft.

BLK 12
#05-38
BLK 2
#05-03

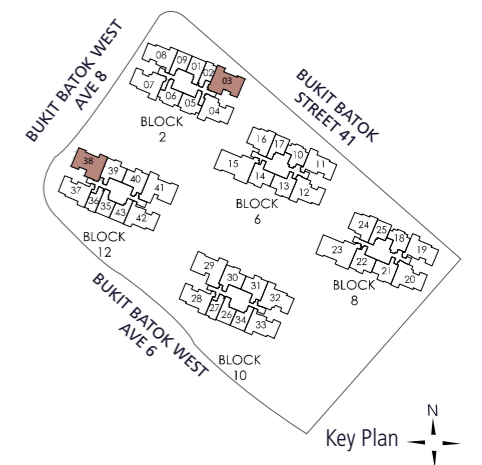
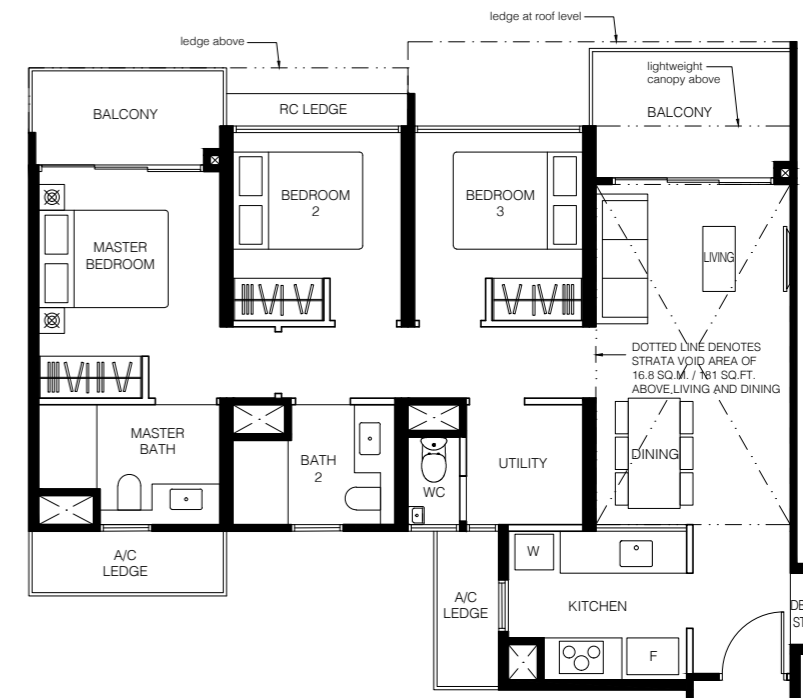


Type C6L

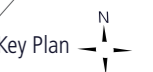
112 sq.m. / 1206 sq.ft.

Including strata void area of 16.8 sq.m. / 181 sq.ft. above living and dining. Approximate 4.5m floor to ceiling height at living and dining.

BLK 12
#16-38
BLK 2
#16-03



LEGEND
DB/ST: Distribution Board/Store
W: Washer cum Dryer
F: Fridge
WC: Water Closet
Wall not to be hacked/altered (including by way of drilling)



The above plans and illustration are subject to change as may be required or approved by the relevant authorities. All areas stated herein include PES (private enclosed space), balcony, A/C ledge and void where applicable. All areas and measurements stated herein are approximate and subject to adjustment on final survey. Please refer to the key plan for orientation.

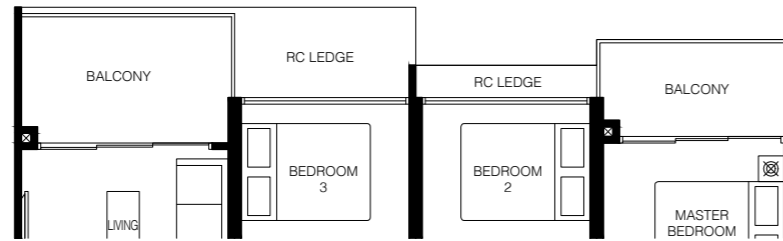
4-Bedroom + Study

Type D1

105 sq.m. / 1130 sq.ft.

BLK 12
#06-41
#09-41
#12-41
#15-41

MIRRORED
BLK 10
#06-29
#09-29
#12-29
#15-29



Type D1

105 sq.m. / 1130 sq.ft.

BLK 12
#07-41
#08-41
#10-41
#11-41
#13-41
#14-41

MIRRORED
BLK 10
#07-29
#08-29
#10-29
#11-29
#13-29
#14-29



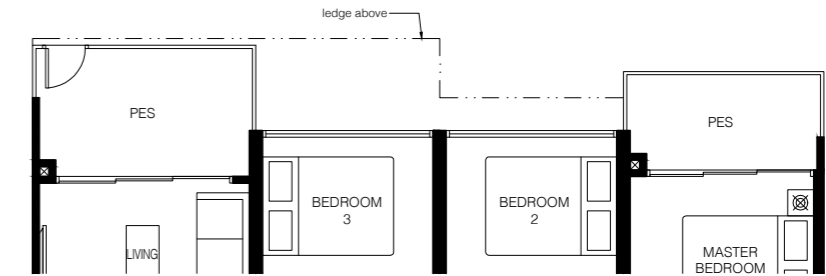
4-Bedroom + Study

Type D1P

105 sq.m. / 1130 sq.ft.

BLK 12
#05-41

MIRRORED
BLK 10
#05-29



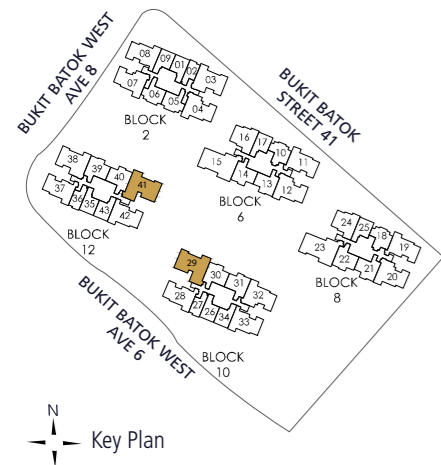
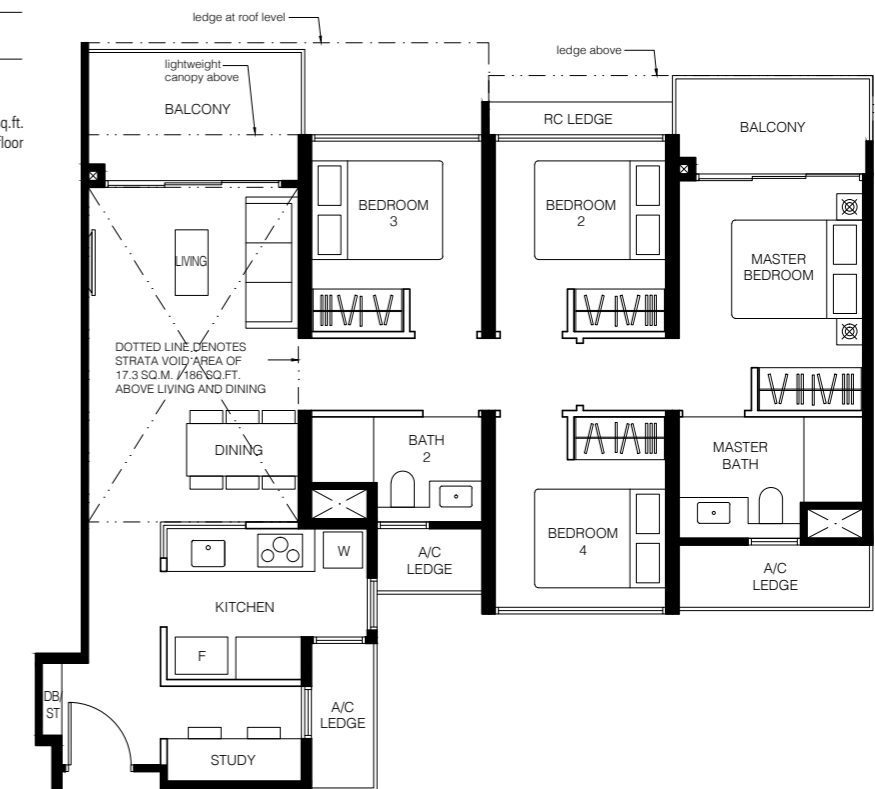
Type D1L

122 sq.m. / 1313 sq.ft.

Including strata void area of 17.3 sq.m. / 186 sq.ft. above living and dining. Approximate 4.5m floor to ceiling height at living and dining.

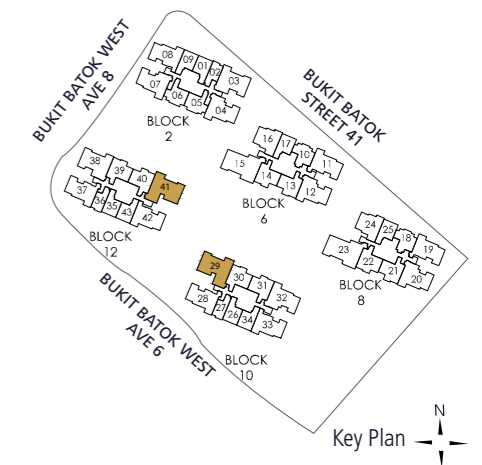
BLK 12
#16-41

MIRRORED
BLK 10
#16-29



LEGEND
DB/ST: Distribution Board/Store
W: Washer cum Dryer
F: Fridge
WC: Water Closet
Wall not to be hacked/alterd (including by way of drilling)

The above plans and illustration are subject to change as may be required or approved by the relevant authorities. All areas stated herein include PES (private enclosed space), balcony, A/C ledge and void where applicable. All areas and measurements stated herein are approximate and subject to adjustment on final survey. Please refer to the key plan for orientation.



LEGEND
DB/ST: Distribution Board/Store
W: Washer cum Dryer
F: Fridge
WC: Water Closet
Wall not to be hacked/alterd (including by way of drilling)

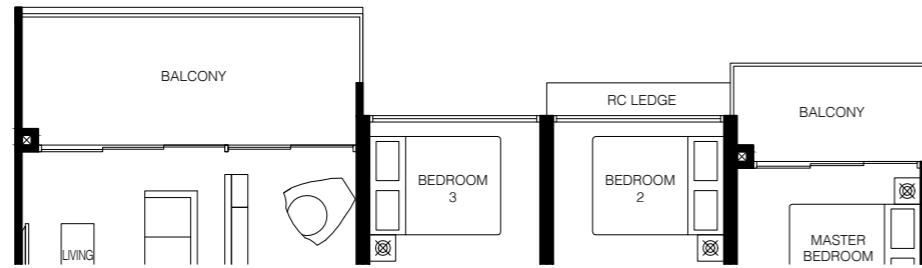
The above plans and illustration are subject to change as may be required or approved by the relevant authorities. All areas stated herein include PES (private enclosed space), balcony, A/C ledge and void where applicable. All areas and measurements stated herein are approximate and subject to adjustment on final survey. Please refer to the key plan for orientation.

4-Bedroom Deluxe

Type D2

122 sq.m. / 1313 sq.ft.

BLK 6	BLK 8
#06-15	#06-23
#09-15	#09-23
#12-15	#12-23
#15-15	#15-23

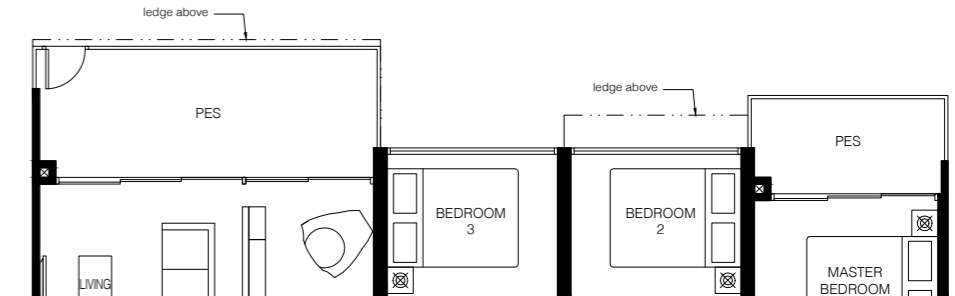


4-Bedroom Deluxe

Type D2P

122 sq.m. / 1313 sq.ft.

BLK 6	BLK 8
#05-15	#05-23



Type D2

122 sq.m. / 1313 sq.ft.

BLK 6	BLK 8
#07-15	#07-23
#08-15	#08-23
#10-15	#10-23
#11-15	#11-23
#13-15	#13-23
#14-15	#14-23

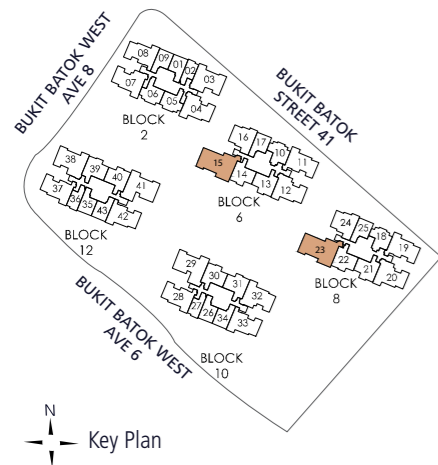
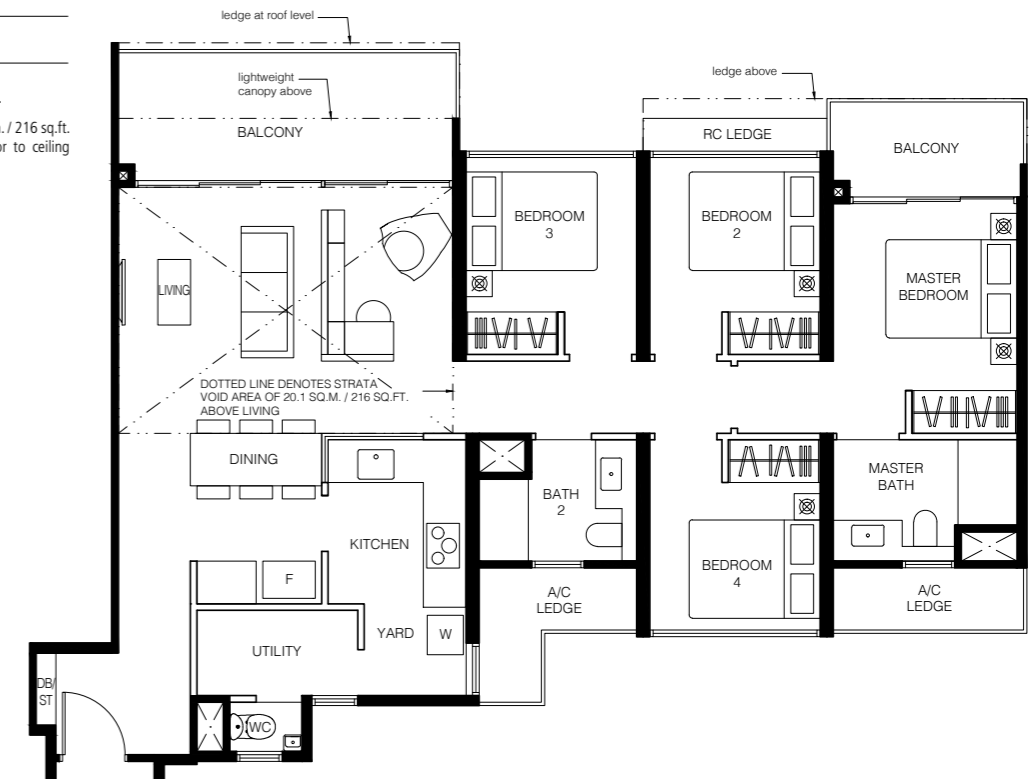


Type D2L

142 sq.m. / 1528 sq.ft.

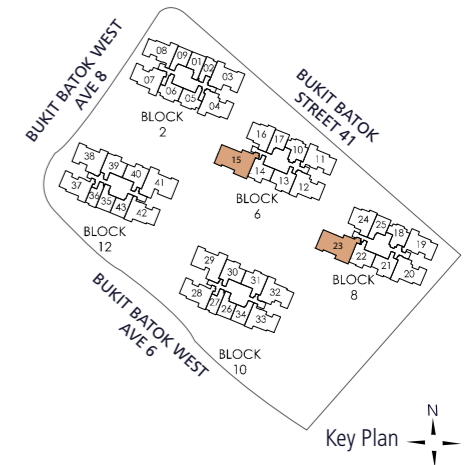
Including strata void area of 20.1 sq.m. / 216 sq.ft. above living. Approximate 4.5m floor to ceiling height at living.

BLK 6	BLK 8
#16-15	#16-23



LEGEND
 DB/ST: Distribution Board/Store
 W: Washer cum Dryer
 F: Fridge
 WC: Water Closet
 Wall not to be hacked/altered (including by way of drilling)

The above plans and illustration are subject to change as may be required or approved by the relevant authorities. All areas stated herein include PES (private enclosed space), balcony, A/C ledge and void where applicable. All areas and measurements stated herein are approximate and subject to adjustment on final survey. Please refer to the key plan for orientation.



LEGEND
 DB/ST: Distribution Board/Store
 W: Washer cum Dryer
 F: Fridge
 WC: Water Closet
 Wall not to be hacked/altered (including by way of drilling)

The above plans and illustration are subject to change as may be required or approved by the relevant authorities. All areas stated herein include PES (private enclosed space), balcony, A/C ledge and void where applicable. All areas and measurements stated herein are approximate and subject to adjustment on final survey. Please refer to the key plan for orientation.

Enquiries: 6858 5777
lequest.com.sg



Developer: Qingjian Realty (BBR) Pte Ltd (ROC: 201613910R) and Qingjian Realty (BBC) Pte Ltd (ROC: 201613900D) • Developer's Licence No.: C1226 • Encumbrances: Mortgage No. IE/576094D in favour of United Overseas Bank Private Limited • Lot/Mukim No.: Lot 05037L MK 10 at Bukit Batok Street 41 • Tenure of Land: 99 years leasehold commencing 29 Aug 2016 • Building Plan No. A1659-00010-2016-BP01 dated 29 May 2017 • Expected Date of Vacant Possession: 29 Nov 2021 • Expected Date of Legal Completion: 29 Nov 2024

While every reasonable care has been taken in preparing this brochure, specifications, constructing the sales models and sales gallery/showflat (the "Materials"), the Developer and its agents and their respective servants and contractors do not warrant the accuracy of any of the Materials and shall in no way be held responsible for any inaccuracies in their contents or between the Materials and the actual unit when built. The Developer shall not be bound by any statement, representation or promise (written or oral) by its agents and contractors. All statements and depictions are believed to be correct but are not to be regarded as statements or representations of fact. The Sale and Purchase Agreement shall form the entire agreement between the Developer and the Purchaser and shall supersede all statements, representations or promises made prior to the signing of the Sale and Purchase Agreement. All information, specifications, layout plans, building plans, location of facilities, finishes and appliance selection and visuals are subject to any changes as may be required and approved by the Architect, Developer and/or by the relevant authority and may be changed without notice. The Materials are not intended to be contractual documents and shall not form part of any offer or contract. Visuals, renderings, illustrations, models, showflat displays and photography are artist's impressions only and none can be regarded as representation of fact. Floor areas are approximate measurements only and not to scale. It is subject to final survey. The property is subject to inspection by the relevant authorities to comply with current codes of practice.

All information, specifications, rendering, visual representations and plans are current at the time of publication and are subject to change as may be required by us and/or the competent authorities, and shall not form part of any offer or contract nor constitute any warranty by us and shall not be regarded as statements or representations of fact. All plans are subject to amendments as directed and/or approved by the building authorities. The Sale and Purchase Agreement shall form the entire agreement between us as the Developer and the Purchaser, and shall supersede all statements, representations or promises made prior to the signing of the Sale and Purchase Agreement and shall in no way be modified by any statements, representations or promises made by us or the Marketing Agent(s).

Note: The Childcare Centre shall occupy a gross floor area of not less than 500 square metres as part of the common property of Le Quest.